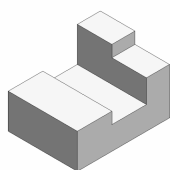
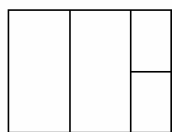
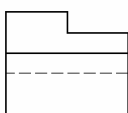
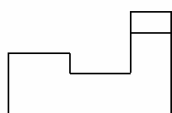


DESENHO BÁSICO – AULA 11

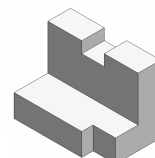
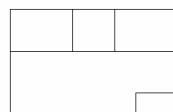
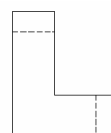
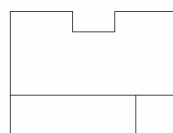
Vistas Ortográficas – Roteiro de desenho com instrumentos

TEM 132 – 27/10

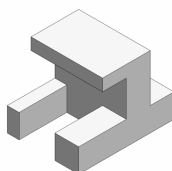
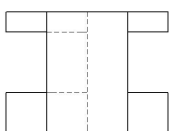
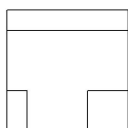
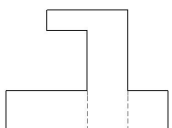
1



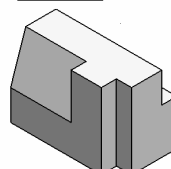
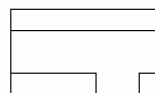
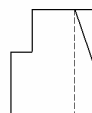
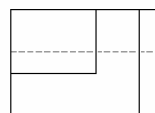
2

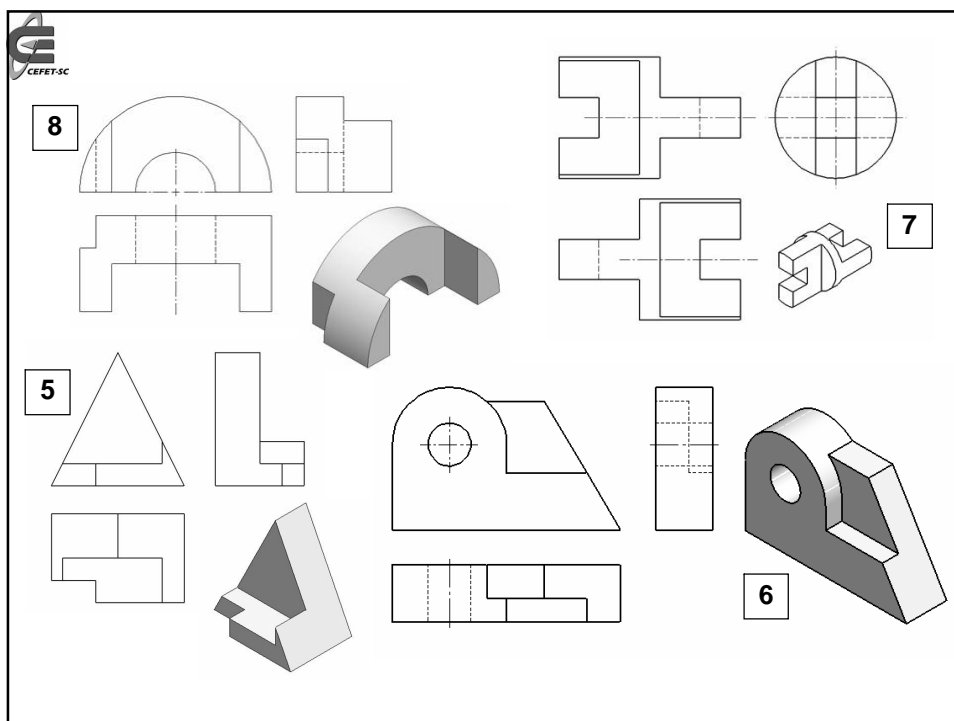



3



4







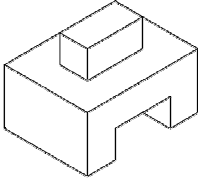
Traçado das vistas com instrumentos

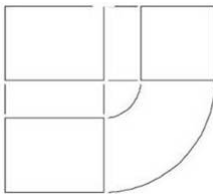
apostila
p. 80

40 x 30 x 30 mm

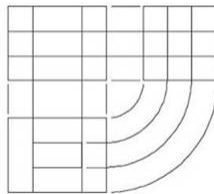
VISTAS DEVEM SER ALINHADAS E ADEQUADAMENTE ESPAÇADAS

observe a utilização de cada tipo de traço:
 contínuo e fino
 contínuo e forte
 tracejado e médio

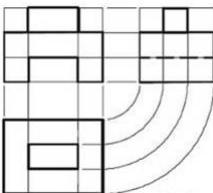




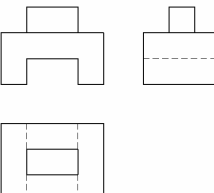
1



2



3



4

Exercício de Vistas Ortográficas - 2

- trace as vistas ortográficas com os instrumentos seguindo o roteiro mostrado abaixo

