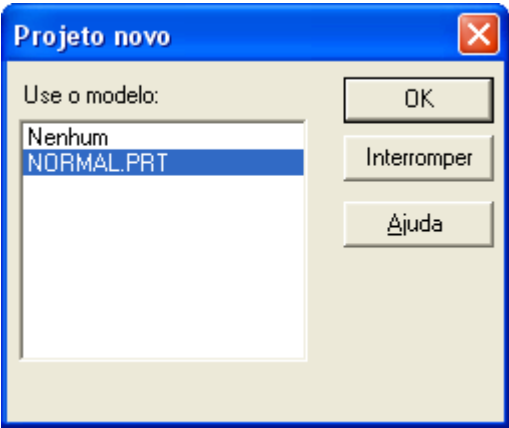
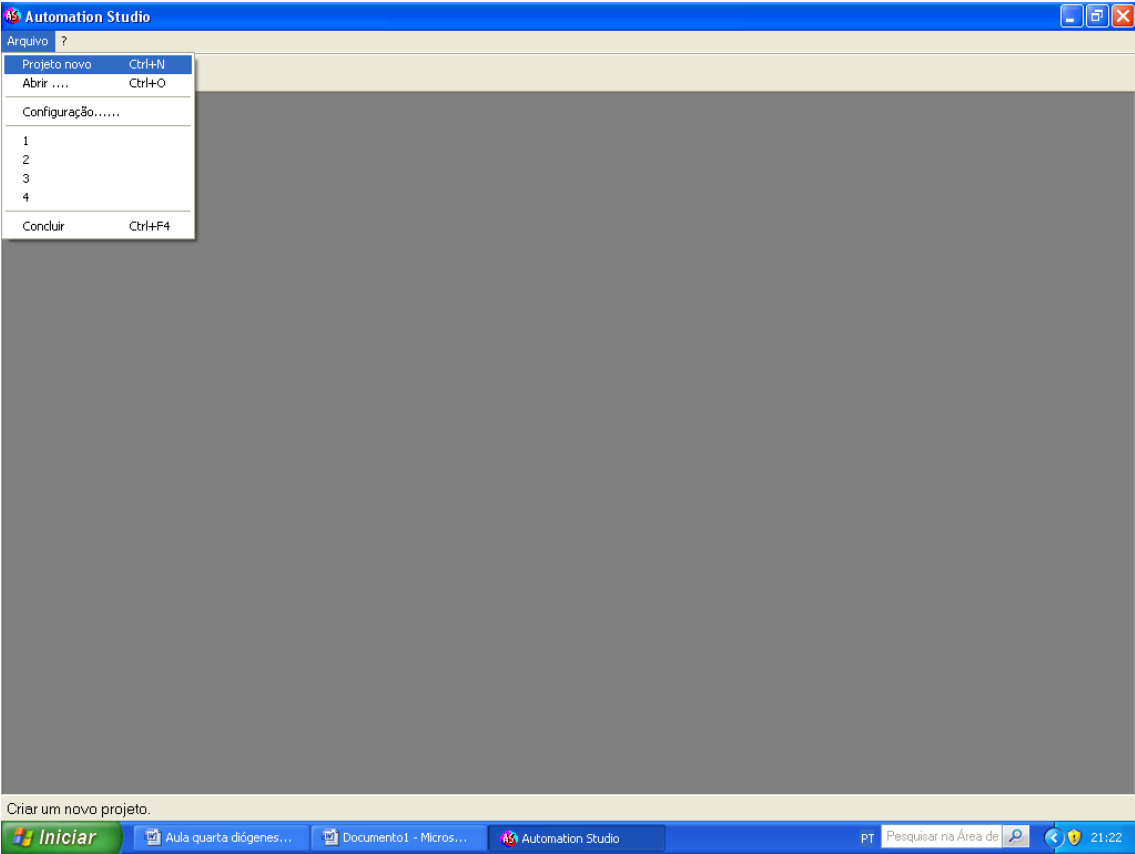
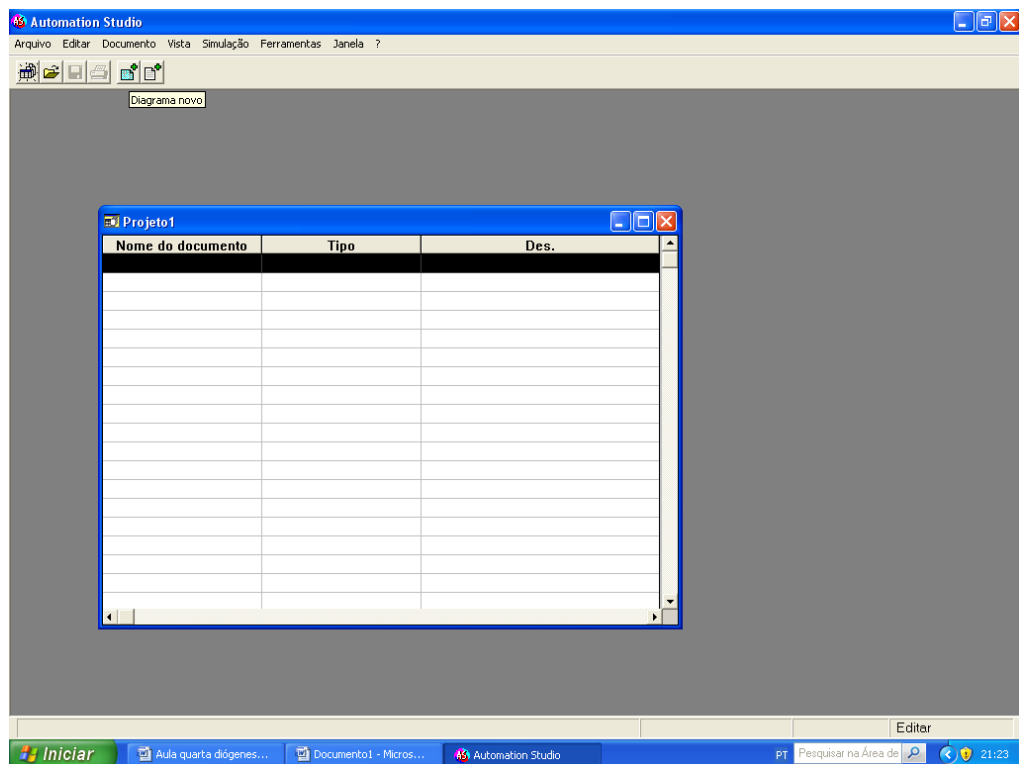
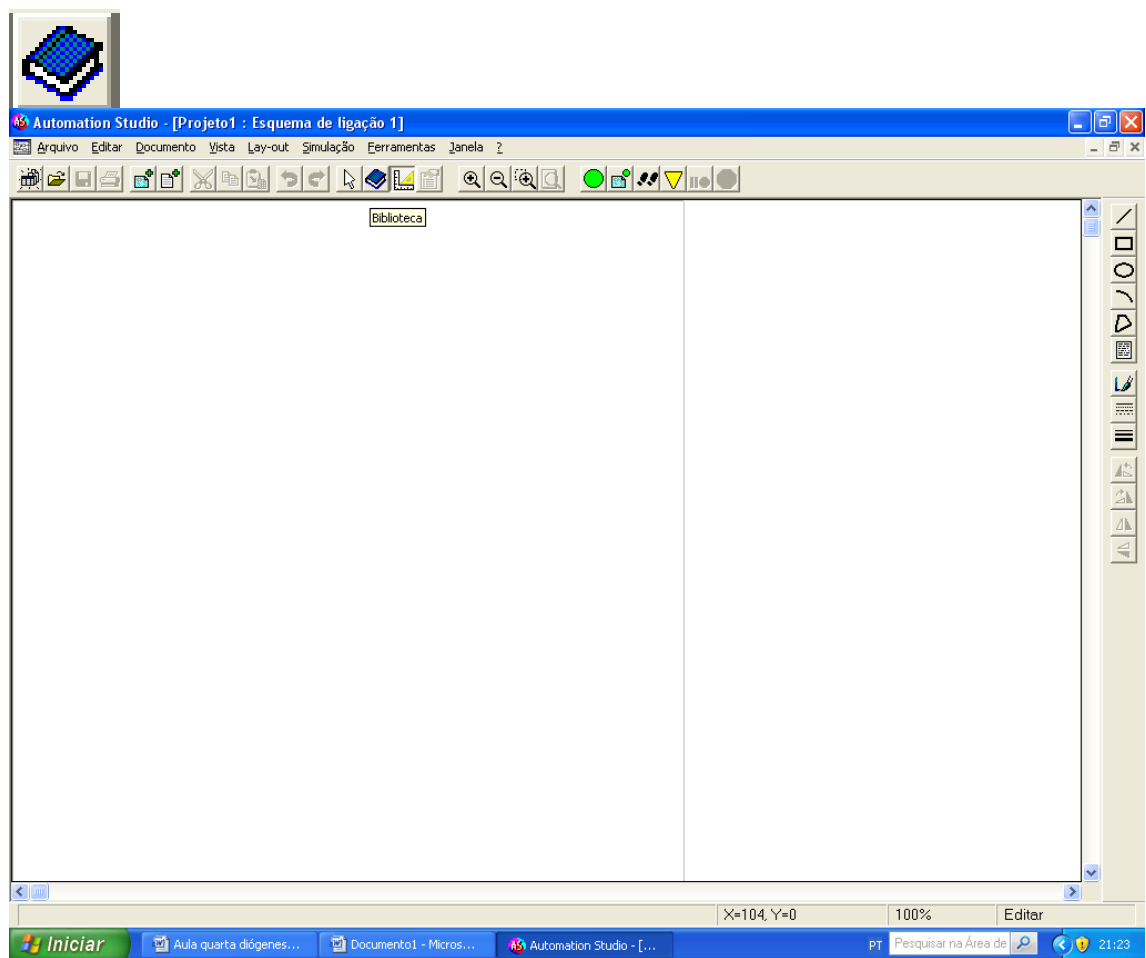


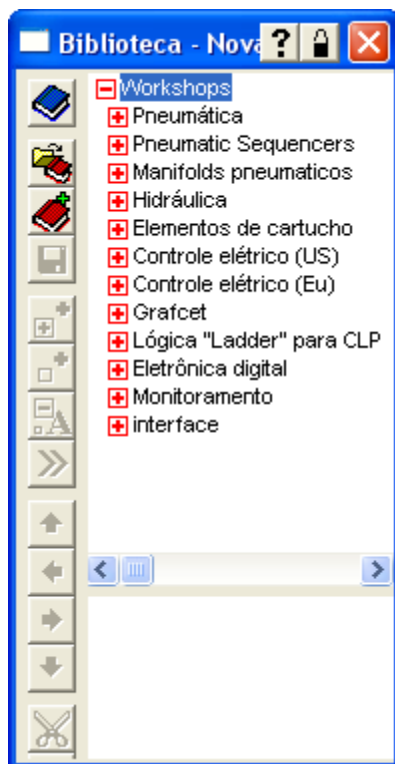
Circuito Pneumático



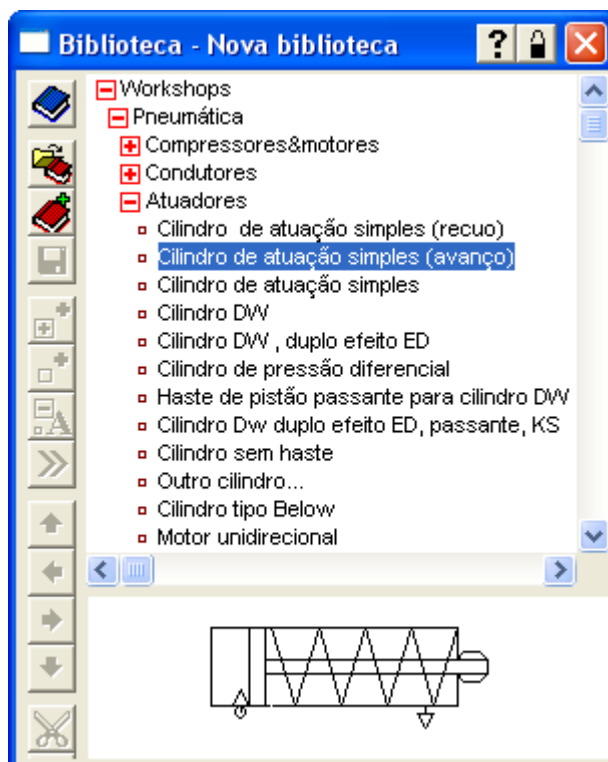


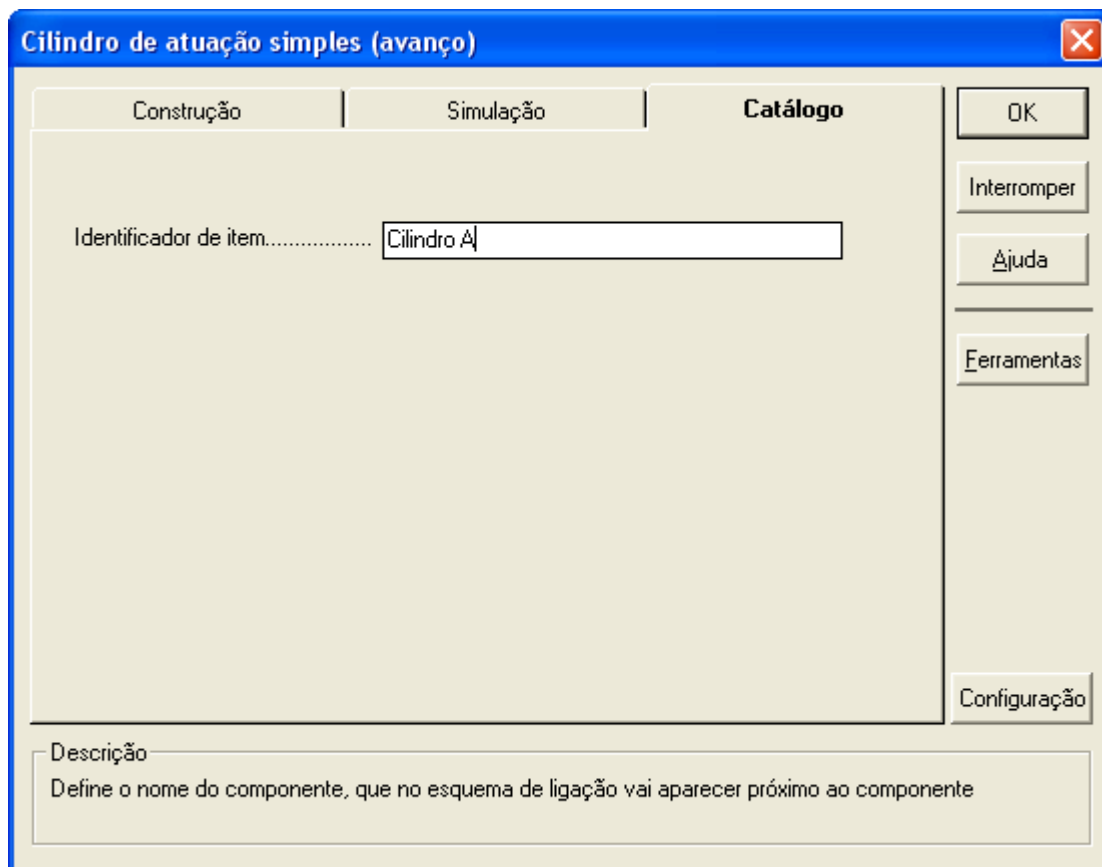
Acesso à biblioteca



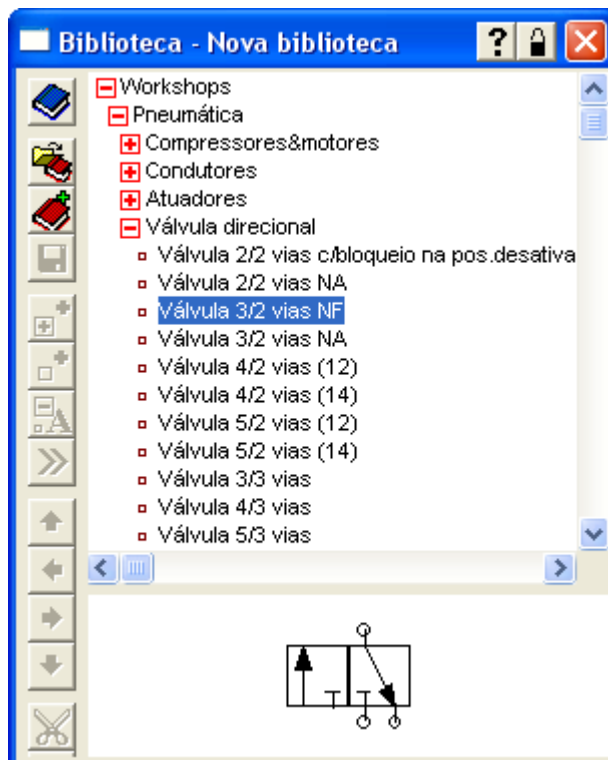


Cilindro simples ação com retorno por mola

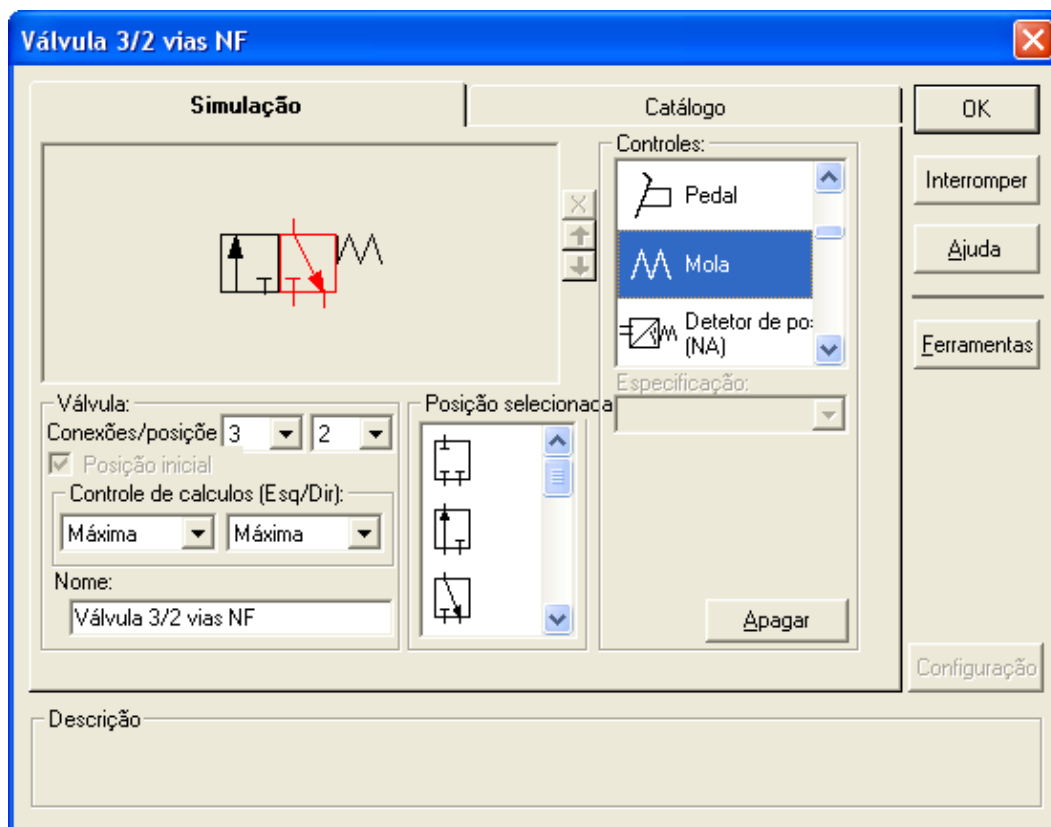




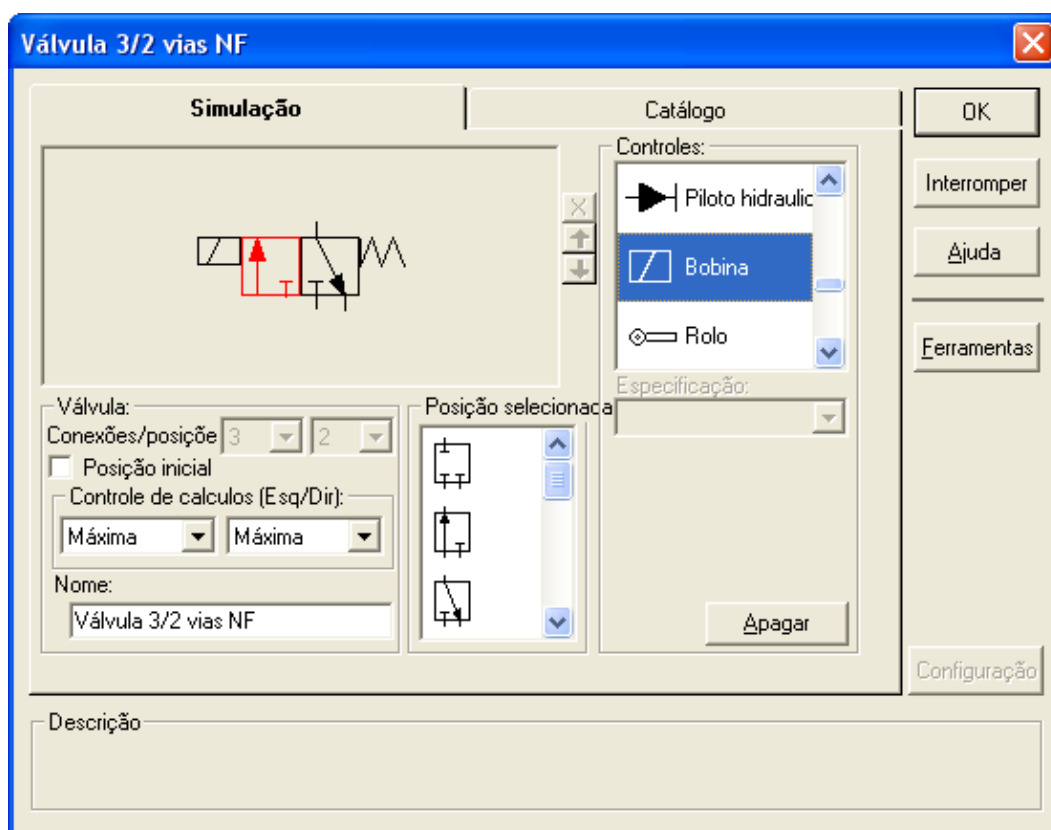
Válvulas 3/2 vias acionamento por solenóide e retorno por mola



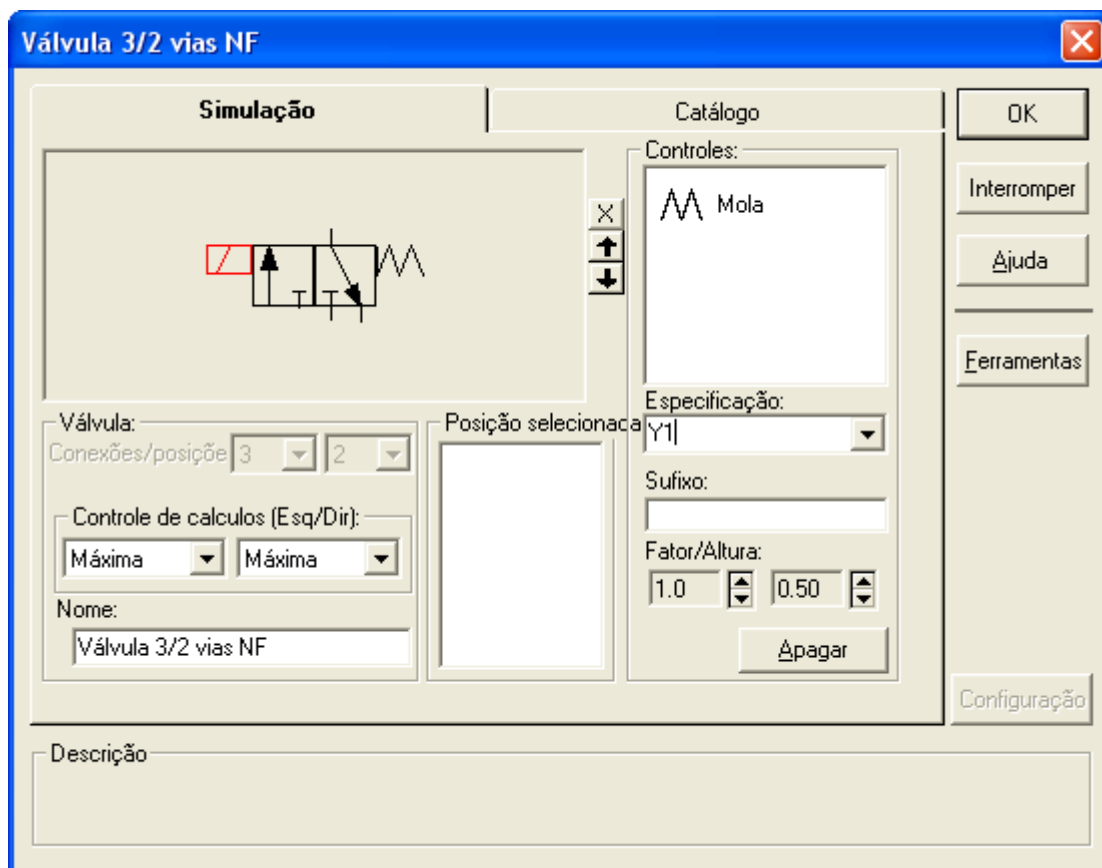
Controle mola → duplo clique na mola



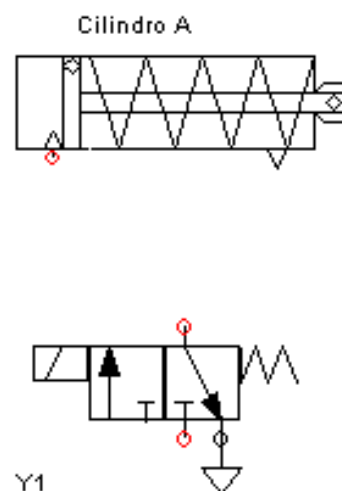
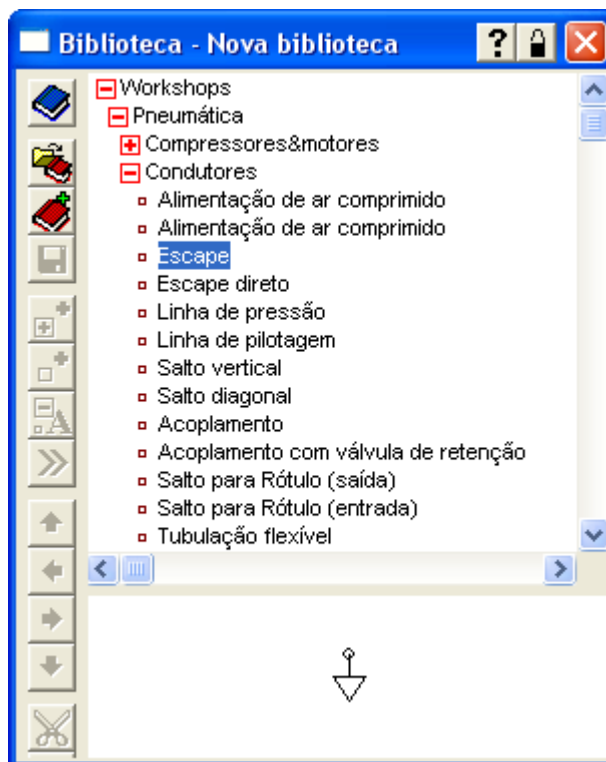
Controle Solenóide (Bobina) → duplo clique na bobina



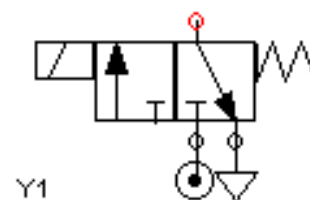
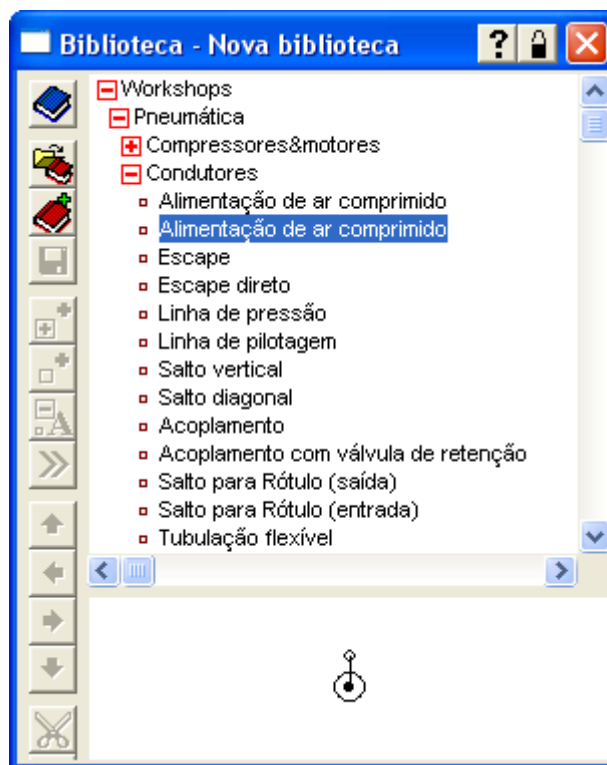
Chamar a bobina de Y1



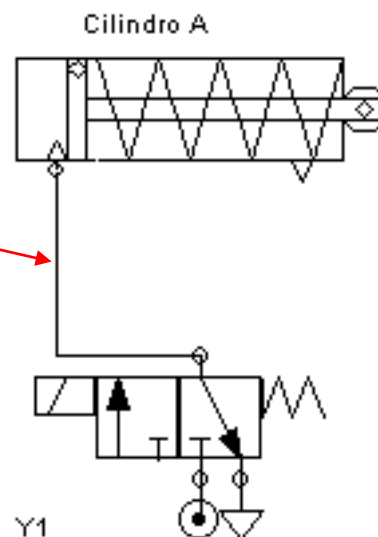
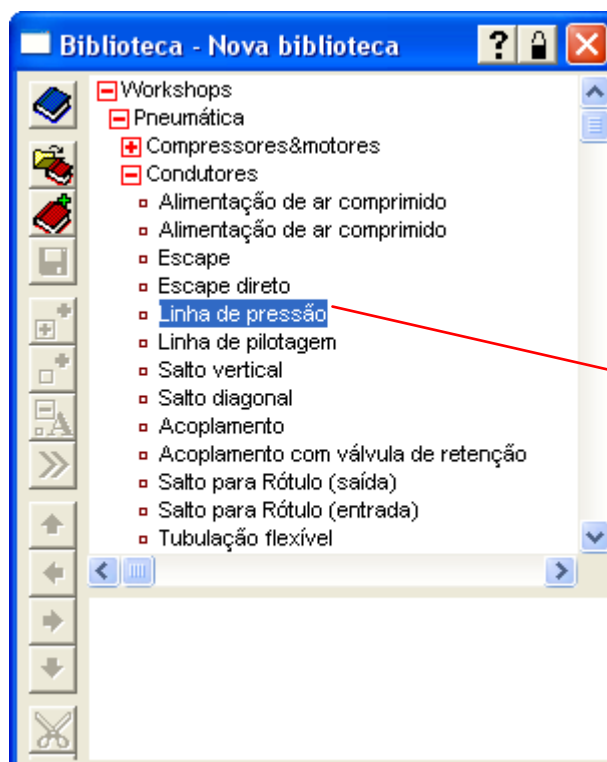
Escape



Alimentação de ar comprimido

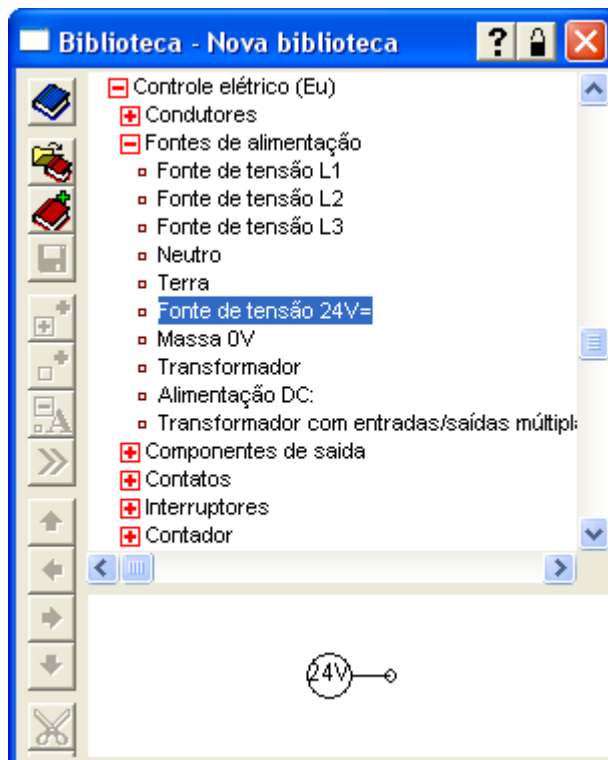


Linha de pressão

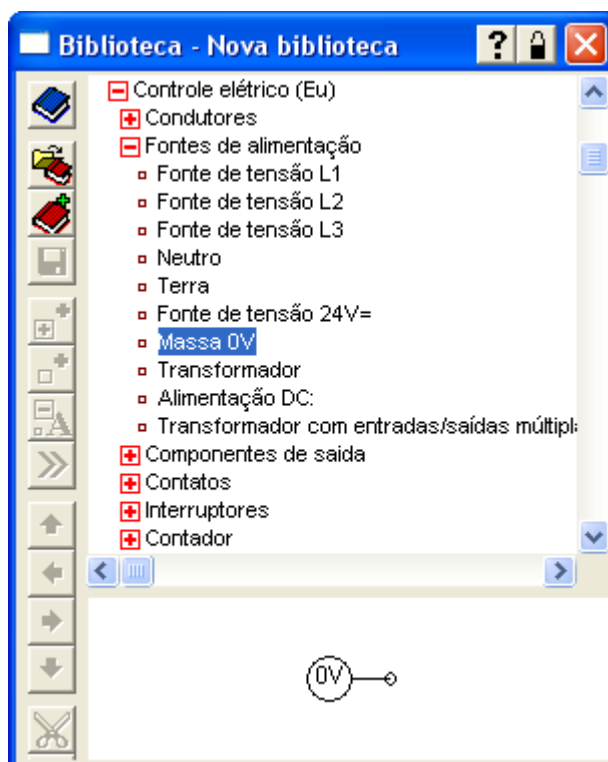


Circuito Elétrico

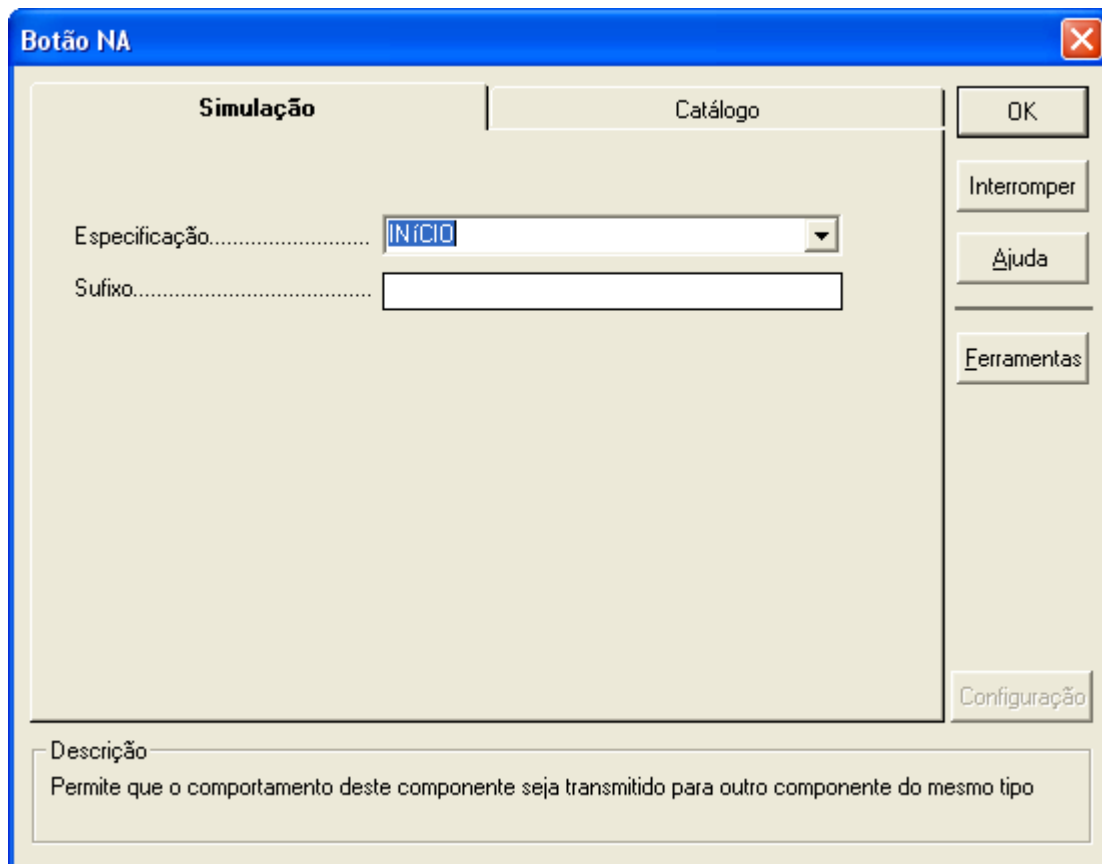
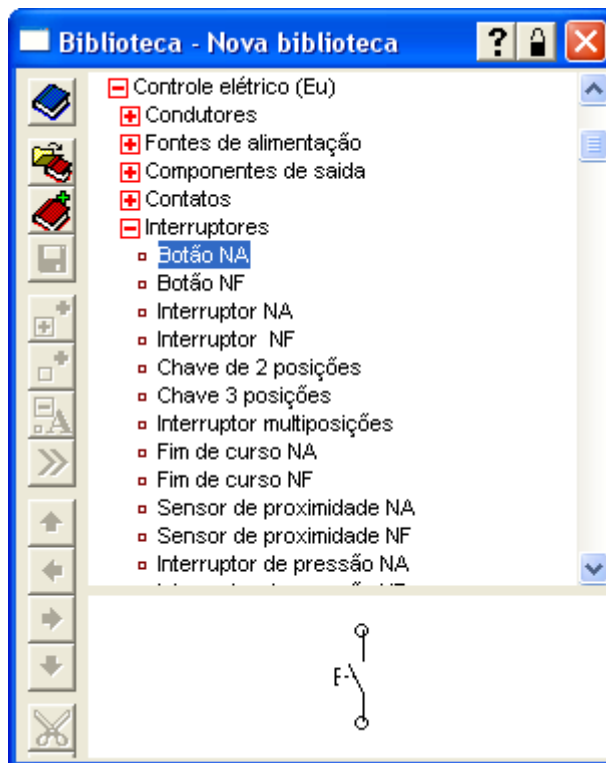
Fontes de alimentação 24 V



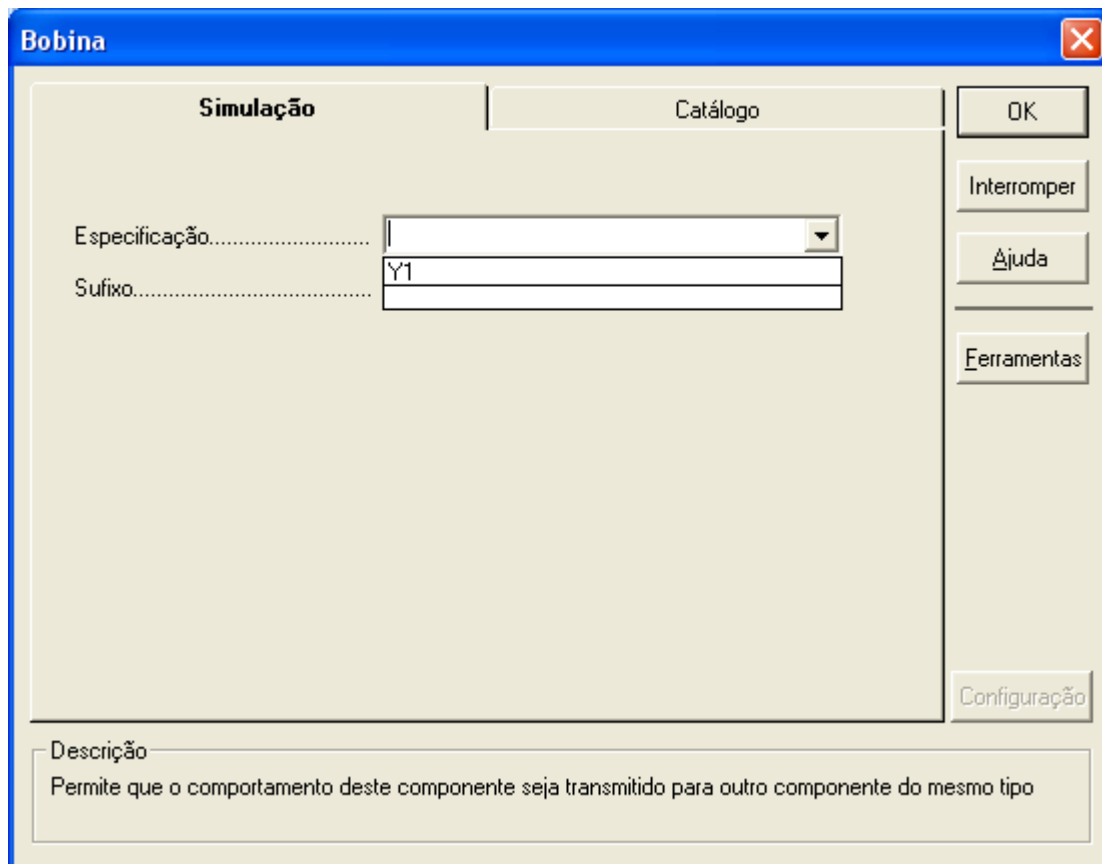
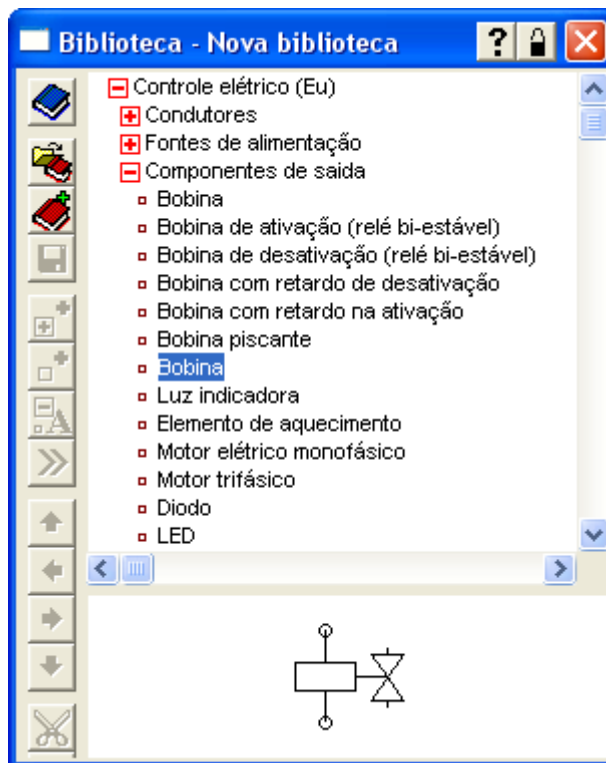
Massa 0V



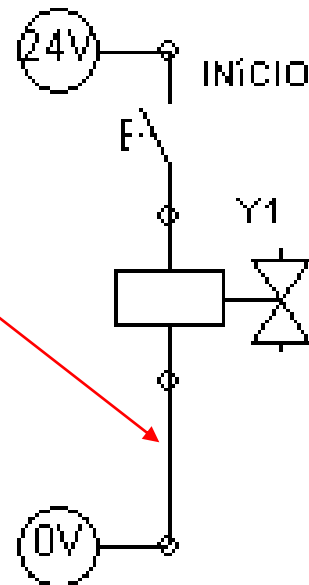
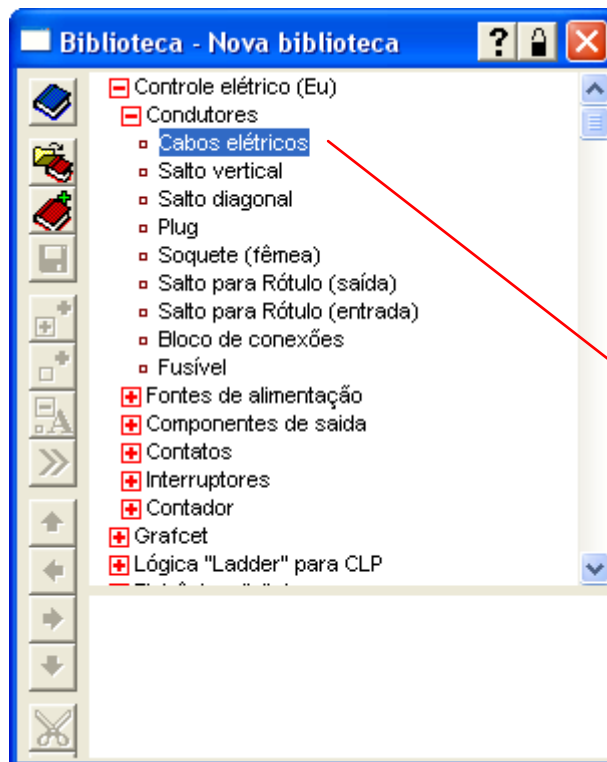
Chave



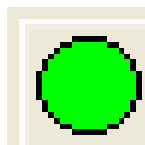
Solenóide Bobina



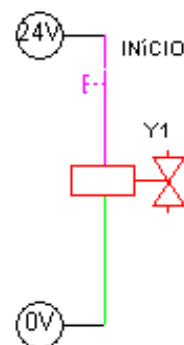
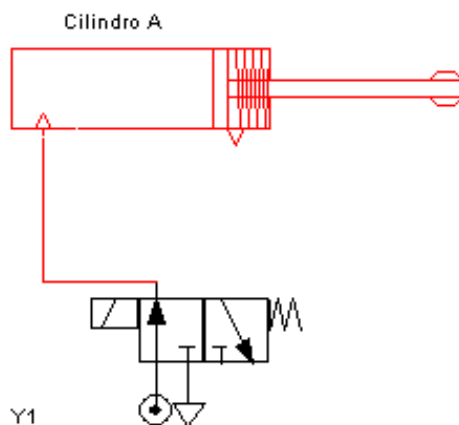
Condutores → Cabos elétricos



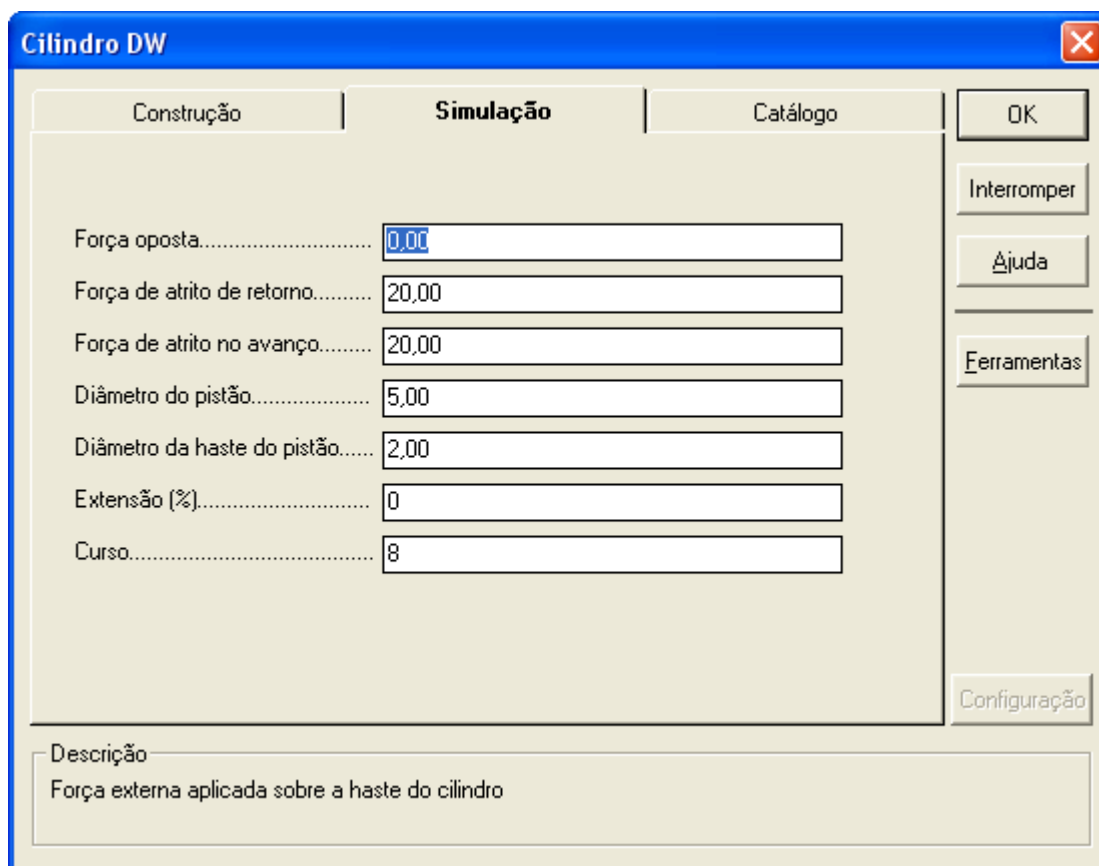
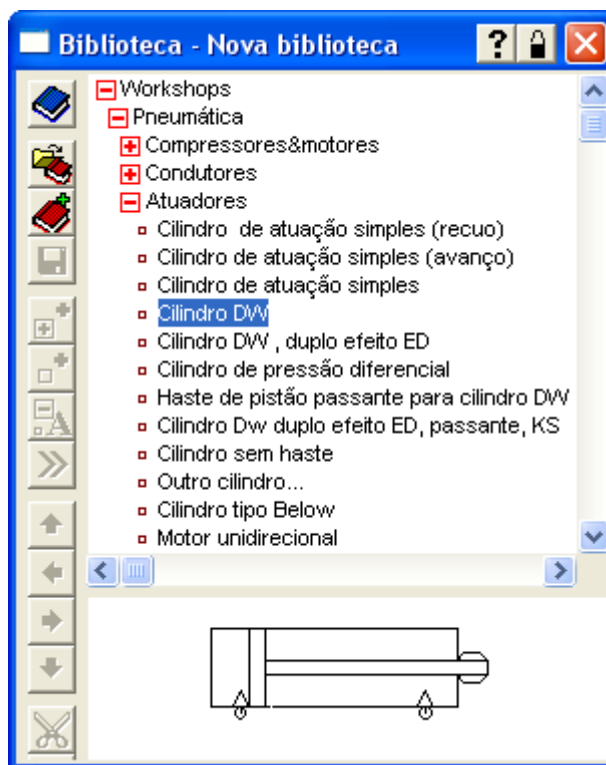
Simulação → Iniciar projeto



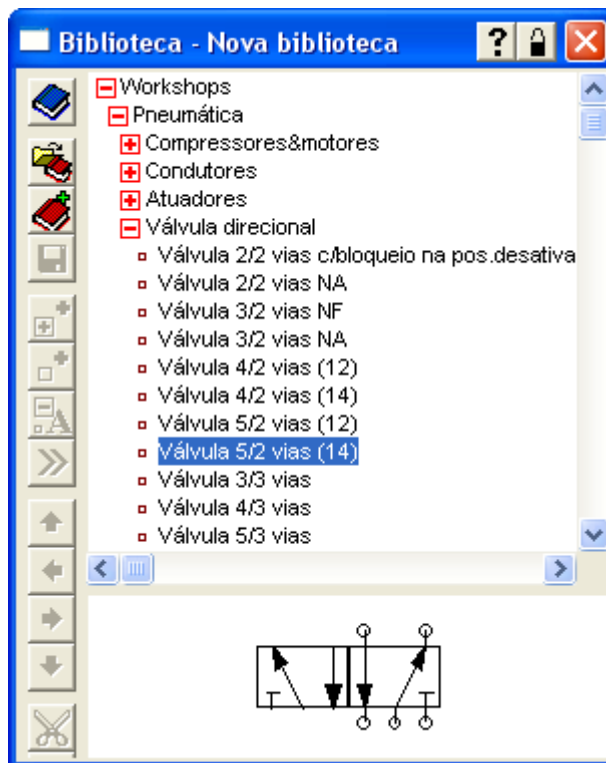
Fechar a chave INÍCIO



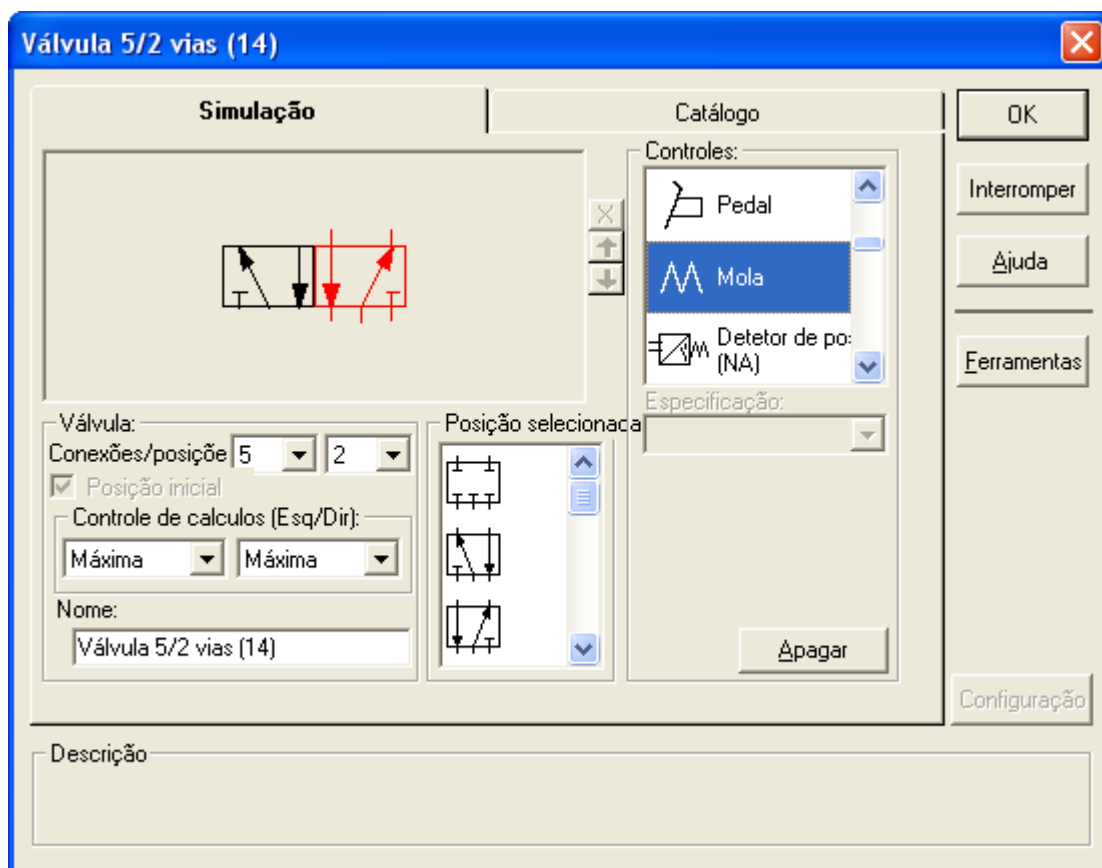
Cilindro dupla ação



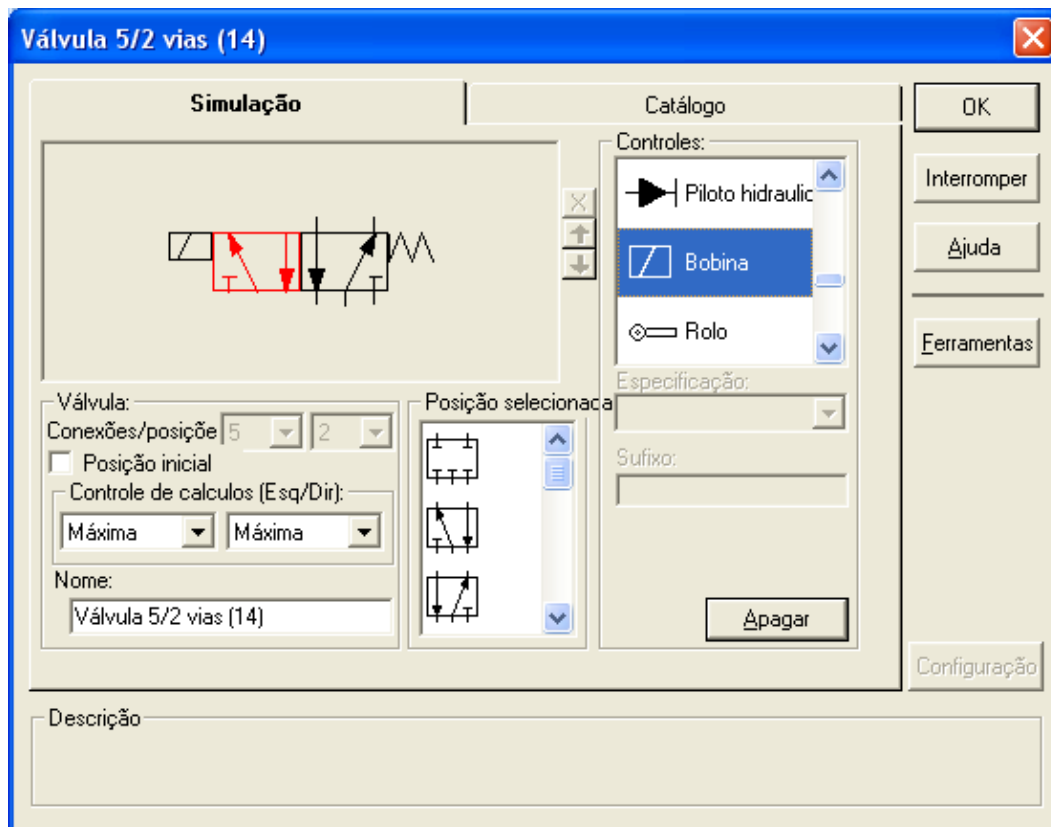
Válvula 5/2 vias com acionamento por solenóide e retorno por mola



Duplo clique na mola



Duplo clique na bobina



Denominar a bobina de Y1

